

- 1 The general formula of monosaccharides is
 - (A) $C_nH_{2n}O_n$
 - (B) $C_{2n}H_2O_n$
 - (C) $C_nH_2O_{2n}$
 - (D) $C_nH_{2n}O_{2n}$
- 2 The aldose sugar is
 - (A) Glycerose
 - (B) Ribulose
 - (C) Erythrulose
 - (D) Dihydroxyacetone
- 3 Polysaccharides are
 - (A) Polymers
 - (B) Acids
 - (C) Proteins
 - (D) Oils
- 4 Which of the following is a non-reducing sugar ?
 - (A) Isomaltose
 - (B) Maltose
 - (C) Lactose
 - (D) Trehalose
- 5 Mutarotation refers to change in
 - (A) pH
 - (B) Optical rotation
 - (C) Conductance
 - (D) Chemical properties
- 6 The sugar found in milk is
 - (A) Galactose
 - (B) Glucose
 - (C) Fructose
 - (D) Lactose
- 7 Sucrose consists of
 - (A) Glucose + glucose
 - (B) Glucose + fructose
 - (C) Glucose + galactose
 - (D) Glucose + mannose
- 8 A positive Benedict's test is not given by
 - (A) Sucrose
 - (B) Lactose
 - (C) Maltose
 - (D) Glucose
- 9 Osazones are not formed with the
 - (A) Glucose
 - (B) Fructose
 - (C) Sucrose
 - (D) Lactose
- 10 A carbohydrate, commonly known as dextrose is

(A) Dextrin	(B) D-Fructose
(C) D-Glucose	(D) Glycogen

- 11 Which of the following is an epimeric pair ?
(A) Glucose and fructose
(B) Glucose and galactose
(C) Galactose and mannose
(D) Lactose and maltose
- 12 Mucopolysaccharides are
(A) Homopolysaccharides
(B) Heteropolysaccharides
(C) Proteins
(D) Amino acids
- 13 All proteins contain the
(A) Same 20 amino acids
(B) Different amino acids
(C) 300 Amino acids occurring in nature
(D) Only a few amino acids
- 14 Sulphur containing amino acid is
(A) Methionine
(B) Leucine
(C) Valine
(D) Asparagine
- 15 Mother of a mal nourished child has been instructed to include a complete protein in diet for her child, which out of the followings proteins should be recommended?
(A) Pulses (B) Wheat
(C) Soy Protein (D) Milk
- 16 Which out of the followings is not a fibrous protein ?
(A) Carbonic anhydrase
(B) Collagen
(C) Fibrinogen
(D) Keratin
- 17 Which of the following is not an aromatic amino acid ?
(A) Serine
(B) Phenylalanine
(C) Tryptophan
(D) Tyrosine
- 18 Which of the following amino acid is polar ?
(A) Valine (B) Histidine
(C) Leucine (D) Isoleucine
- 19 Which of the following is not a type of protein secondary structure ?
(A) β -pleated sheet
(B) α -helix
(C) Third level folding to form small globules
(D) Turns
- 20 α -helix has
(A) 3.4 amino acid residues/turn
(B) 3.6 amino acid residues/turn
(C) 3.8 amino acid residues/turn
(D) 3.0 amino acid residues/turn

- 21 Tertiary structure is maintained by
 (A) Peptide bond
 (B) Hydrogen bond
 (C) Di-sulphide bond
 (D) All of these
- 22 Denaturation of proteins results in
 (A) Disruption of primary structure
 (B) Breakdown of peptide bonds
 (C) Destruction of hydrogen bonds
 (D) Irreversible changes in the molecule
- 23 Which of the following is not an amino acid ?
 (A) Glutamic acid
 (B) Aspartic acid
 (C) Glutamine
 (D) Palmitic acid
- 24 At neutral pH, a mixture of amino acids in solution would be predominantly:
 (A) Dipolar ions
 (B) Nonpolar molecules
 (C) Positive and monovalent
 (D) Hydrophobic
- 25 An aromatic amino acid is
 (A) Lysine (B) Tyrosine
 (C) Taurine (D) Arginine
- 26 Non essential amino acids
 (A) Are not components of tissue proteins
 (B) May be synthesized in the body from essential amino acids
 (C) Have no role in the metabolism
 (D) May be synthesized in the body in diseased states
- 27 An example of scleroprotein is
 (A) Zein
 (B) Keratin
 (C) Glutenin
 (D) Ovoglobulin
- 28 Proteins are soluble in
 (A) Anhydrous acetone
 (B) Aqueous alcohol
 (C) Anhydrous alcohol
 (D) Benzene
- 29 Tertiary structure of a protein describes
 (A) The order of amino acids
 (B) Location of disulphide bonds
 (C) Loop regions of proteins
 (D) The ways of protein folding
- 30 Protein + prosthetic group = _____.
 (A) Simple protein
 (B) Conjugated protein
 (C) Globular protein
 (D) Fibrous protein

- 31 Which the following is the word regarding steroids is not correct ?
- (A) Cortisone
 - (B) Progesterone
 - (C) Glycolipid
 - (D) Ergosterol
- 32 Which of the following statement regarding to properties of starch is not correct ?
- (A) Present of amylose and amylopectin chains.
 - (B) Stored food in plants.
 - (C) Soluble in water.
 - (D) Not sweet.
- 33 Which one of the following pairs is not correctly matched ?
- (A) Triose sugar-Glyceraldehydes-Aldo sugar.
 - (B) Pentose sugar-Ribulose-Keto sugar.
 - (C) Hexose sugar-Fructose -Aldo sugar.
 - (D) Triose sugar-Dihydroxy acetone -Keto sugar.
- 34 Which the following pair regarding to biological importance of carbohydrates is not correctly matched ?
- (A) Cellulose-Forms the plant cell wall.
 - (B) Glycogen -Reserve food in animals.
 - (C) Ribose sugar-Structural components of ATP.
 - (D) Glucose-The most widely used in respiration.
- 35 Which the following regarding to examples of Keto sugar is not correctly?
- (A) Fructose
 - (B) Ribulose
 - (C) Ribose sugar
 - (D) Dihydroxy acetone

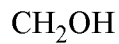
- 36 Which of the following pairs is not correctly matched ?
- (A) Butter – Glycerol + 3 Fatty acids.
 - (B) Glycolipid – Glycerol + Lipid.
 - (C) Waxes – Monohydroxy alcohol + 1 Fatty acid.
 - (D) Cortisone – Present of –COOH or keto group
- 37 Which of the following option is not correctly for glucose molecule ?
- (A) It is Keto hexoses sugar.
 - (B) Hydrolysis of a molecule of maltose
 - (C) It can pass through the cell membrane
 - (D) Found in the juice of fruits.
- 38 Which one of the following pairs is not correctly matched ?
- (A) Galactose – Lactose
 - (B) Fructose – Glucose
 - (C) Fructose – Galactose
 - (D) Ribose – Deoxyribose.
- 39 Which one of the following pairs is not correctly matched ?
- (A) Triose sugar – DHAP.
 - (B) Starch – amylase and amylopectin.
 - (C) Phospholipid – plasma membrane.
 - (D) Cortisone – sterols.
- 40 Which one of the following pairs is correctly matched ?
- (A) Fats -Long saturated Fatty acids chain.
 - (B) Derivatives of Lipid -Vitamins A, D, E.
 - (C) Deoxyribose -RNA.
 - (D) Glycogen -Forms the plant cell wall.

- 41 Lipids are relatively insoluble in....
(A) Chloroform
(B) Water
(C) Benzene
(D) Ether
- 42 Which of the following statement regarding the Fatty acid is not correct?
(A) Unsaturated fatty acids are two successive carbon atoms at certain places therein are linked by a double bond.
(B) Saturated fatty acids are capable of accepting hydrogen or halogen atoms.
(C) Butyric acid and palmitic acids are Saturated fatty acids
(D) Crotonic acid and oleic acid are Unsaturated fatty acids.
- 43 Which of the following statement regarding to Lipid is not correct ?
(A) Lipids are of three types i Simple ii Complex iii Steroids
(B) The lipids are a heterogeneous group of compounds related to Fatty acids.
(C) Lipids are the important constituents of the diet because of their high energy value.
(D) Lipids are formed of C, H and O atoms, The number of H atom is less than that of O.
- 44 Which of the following statement regarding to Amylase is not correct ?
(A) Unbranched polysaccharide chains made up of glucose units.
(B) Amylase occur in the constitution of glycogen.
(C) Amylase occur in more amount in starch.
(D) None of these
- 45 Which of the following options suggest number of carbons in descending order ?
P Fructose Q Palmitic acid
R Ribulose S Oleic acid.
(A) R- Q - P - S
(B) R-P- Q - S
(C) S - Q - P-R
(D) S -P - Q -R
- 46 In the formation of triglyceride, glycerol get linked with any Fatty acids by..
(A) $-\text{NH}_2$
(B) $-\text{COOH}$
(C) $-\text{CHO}$
(D) $>\text{C}=\text{O}$

47 Which of the following is an aldose sugar ?

- (A) Glucose
- (B) Galactose
- (C) both Glucose and Galactose
- (D) None of these

48 Which of the following structure show the types of sugar ?



|



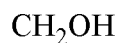
|



|

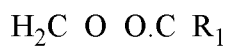


|

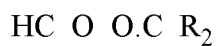


- (A) Aldo triose sugar
- (B) Aldo pentose sugar
- (C) Keto triose sugar
- (D) Keto pentose sugar

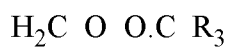
49 Which molecules are the consist of a following molecule structure ?



|



|



- (A) 3 glycerol + 1 fatty acid
- (B) 1 glycerol + 3 fatty acid
- (C) 3 glycerol + 3 fatty acid
- (D) glycerol + fatty acid

50 Which of the following the general formula of Carbohydrate ?

- (A) $\text{C}_n(\text{H}_2\text{O})_m$
- (B) $\text{C}_n(\text{H}_2\text{O})_{n-1}$
- (C) $(\text{C}_6\text{H}_1\text{O}_5)_n$
- (D) None of these